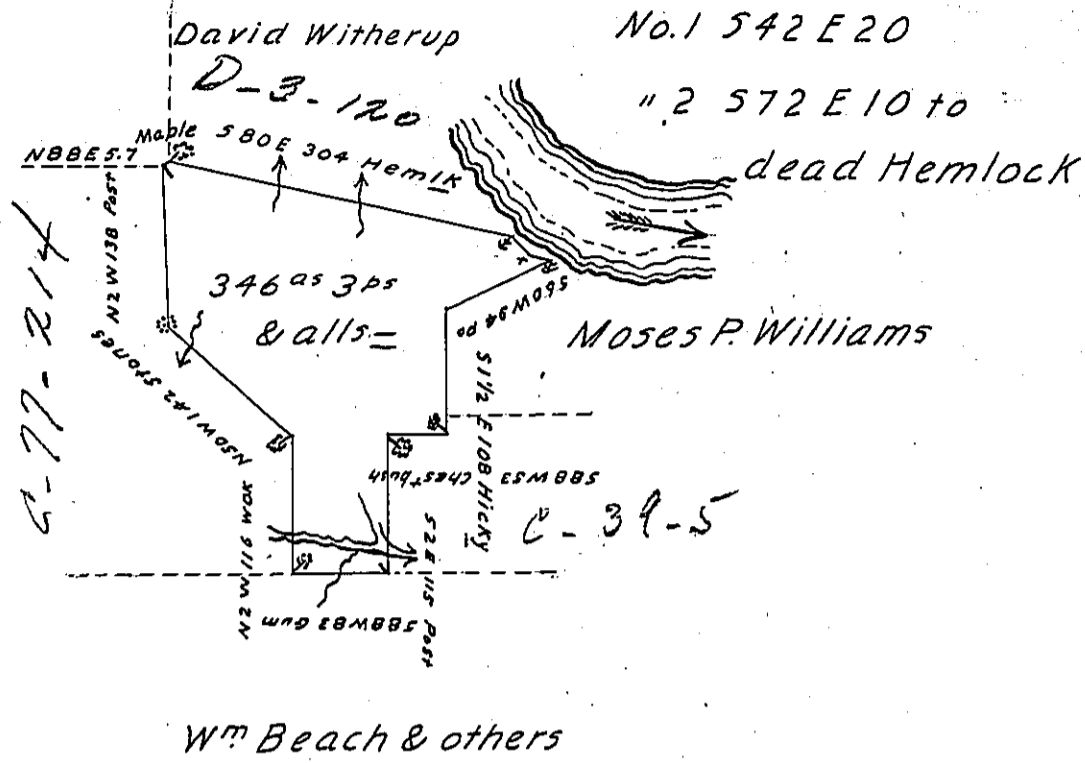


Courses & distances
down River from Hemlock



No. 1 542 E 20

" 2 572 E 10 to

dead Hemlock

Wm F. Clark

Moses P. Williams

Wm Beach & others

X

Draft of a tract of land Situate in Sandy Creek Township, Venango County,

West of and partly adjoining the Allegheny River.

Survey'd October 17th 1860 for Samuel Byers on improvement
and settlement.

Wm Hilands

Hon. Wm H. Keim

C. S.

Surveyor General

IN TESTIMONY that the above is a copy of the original remaining on file in
the Department of Internal Affairs of Pennsylvania, made
conformably to an Act of Assembly approved the 16th day of
February, 1833, I have hereunto set my Hand and caused
the Seal of said Department to be affixed at Harrisburg,
this twentieth day of February 1904.

Loac R. Brown
Secretary of Internal Affairs.